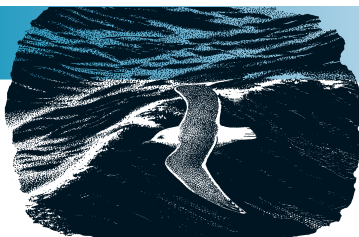


# Larus fuscus

## LESSER BLACK-BACKED GULL

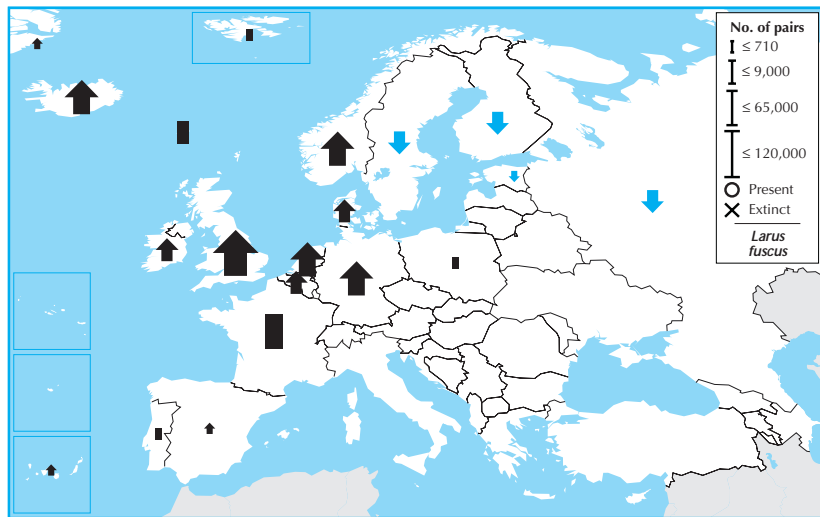


Non-SPEC<sup>E</sup> (1994: 4) **Status** Secure  
Criteria —

**European IUCN Red List Category** —  
Criteria —

**Global IUCN Red List Category** —  
Criteria —

*Larus fuscus* is a widespread breeder in coastal areas of northern and western Europe, which constitutes >75% of its global breeding range. Its European breeding population is large (>300,000 pairs), and increased between 1970–1990. This trend continued during 1990–2000, with declines in a few countries in the north-east of its range more than compensated for by increasing or stable trends elsewhere. Consequently, it is evaluated as Secure.



Country	Breeding pop. size (pairs)	Year(s)	Trend	Mag.%	References
Belgium	2,800 – 2,800	00–02	+	>80	1
Denmark	4,000 – 6,000	00	(+)	(50–79)	3
Faroe Is.	9,000 – 9,000	95	(0)	(0–19)	
Greenland	(500 – 1,000)	90–00	(+)	(0–19)	3,15
Estonia	80 – 120	98	–	20–29	1
Finland	5,000 – 7,000	98–02	–	15	
France	22,500 – 23,030	97–00	0	0–19	1
Germany	23,000 – 29,000	95–99	+	50–79	
Iceland	25,000 – 35,000	97	+	0–19	16
Rep. Ireland	2,900 – 2,900	99–02	+	50–79	
Netherlands	58,500 – 72,000	98–00	+	184	1
Norway	30,000 – 40,000	90–01	+	0–19	35
Svalbard	0 – 2	95–03	0	0–19	
Poland	0 – 3	90–00	0	0–19	72,73
Portugal	5 – 10	02	0	0–19	
Russia	4,000 – 5,700	90–00	–	20–29	59,65,96
Spain	480 – 500	98–02	+	20–29	10
Canary Is.	15 – 15	97–03	(+)	(N)	30
Sweden	2,000 – 5,000	99–00	–	50–79	
UK	114,000 – 114,000	98–02	+	29	20

Total (approx.) Breeding range: 300,000 – 350,000 >1,000,000 km<sup>2</sup>  
Overall trend: Large increase  
Gen. length: 11 % Global pop.: 75–94

Country	Winter pop. size (individuals)	Year(s)	Trend	Mag.%	References
Belgium	1,000 – 1,000	95–00	(0)	(0–19)	1
Croatia	(50 – 100)	02	?	–	16
Cyprus	50 – 500	94–02	0	0–9	
France	(50,000 – 150,000)	98–02	?	–	9
Greece	(50 – 200)	95–00	(F)	(>80)	
Italy	(300 – 1,500)	02	(0)	(0–19)	22
Netherlands	600 – 700	99–01	+	258	3,4,8,9,11,12
Romania	50 – 100	90–00	(0)	(0–19)	60
Spain	(17,000 – 79,000)	90–01	(+)	(>80)	19
Turkey	30 – 90	91–01	F	>80	
UK	60,800 – 60,800	93	+	0–19	45

Total (approx.) % in European IBAs: >130,000 16–20  
Overall trend: Large increase  
Gen. length: 11 % Global pop.: 25–49

